

CARROSSERIES MK/DK5/D5G

MK

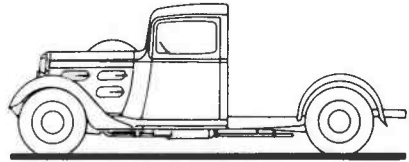
TYPE	DESIGNATION DES CARROSSERIES	POIDS			ENCOMBREMENT		
		Châss. nu	Carr. seule	Total	Long.	Larg.	Haut.
MKC	Châssis cabine 2 pl.	821			4,45	{ 1,60 1,58	1,69
MKB	Boulangère 2 pl.	821	430	1251 { 572 679	4,68	{ 1,60 1,84	2,09
MKL	Fourgon 2 pl.	821	457	1278 { 584 694	4,80	{ 1,60 1,84	1,89

MKD

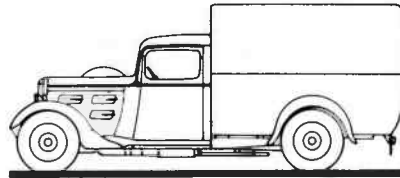
MAC	Châssis cabine 2 pl.	850					
MAB	Boulangère 2 pl.	850	444	1294	5,05	1,70	1,97
MAL	Fourgon 2 pl.	850	482	1332	5,05	1,70	1,97

MKDJ

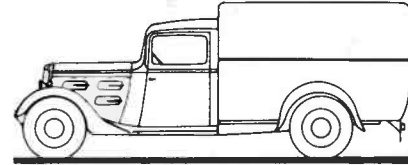
	Plateau bas roues jumelées 2 pl.	907	443	1350	5,10	1,85	1,94
	Plateau haut roues jumelées 2 pl.	907	465	1372	5,10	1,85	1,94
MABJ	Boulangère roues jumelées 2 pl.	907	474	1381	5,05	1,85	1,99
MALJ	Fourgon roues jumelées 2 pl.	907	508	1415	5,05	1,85	1,99



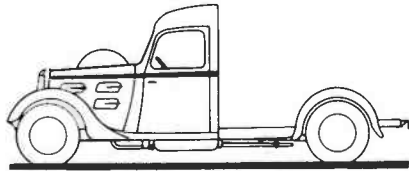
MKC



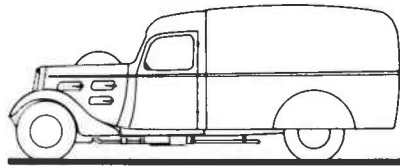
MKB



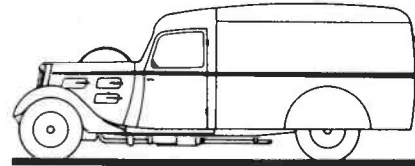
MKL



MAC



MAB_MABJ



MAL_MALJ